

# SM Testpod



## DESIGN

SM Testpod are designed to maximize accessibility, ease of integration, flexibility and **compatibility with cubesat dimensional and mechanical specifications.**

Modular integration concept allows to customize the configuration on the basis of different payloads and subsystem chosen.

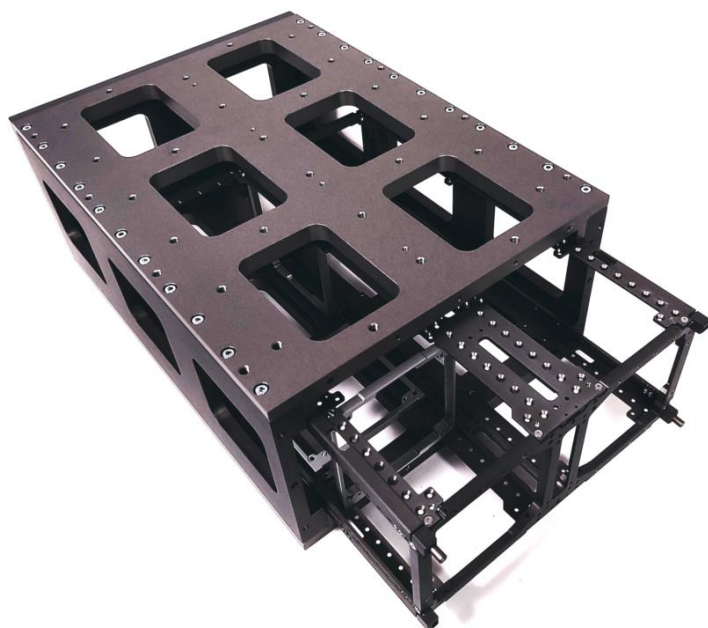
## QUALITY ASSURANCE

NPC is a company certified ISO9001 for Quality management system. Qualification process has been pursued for each SM structures (QT). Product Assurance protocols are applied to each delivered SM Product (AT).

Qualification Test	QT	AT
Pre-production control	✓	✓
In-take quality control	✓	✓
Acceptance quality control	✓	✓
Vibration test	✓	-
Mechanical Shock	✓	-
Surface Treatment Test	✓	-
Functional and assembly test	✓	✓

## OPTION AND CUSTOMIZATION

SM Testpod can be configured with optional additional part in order to increase the product flexibility Nevertheless, custom configurations can be agreed with Spacemind to meet specific design requirements.

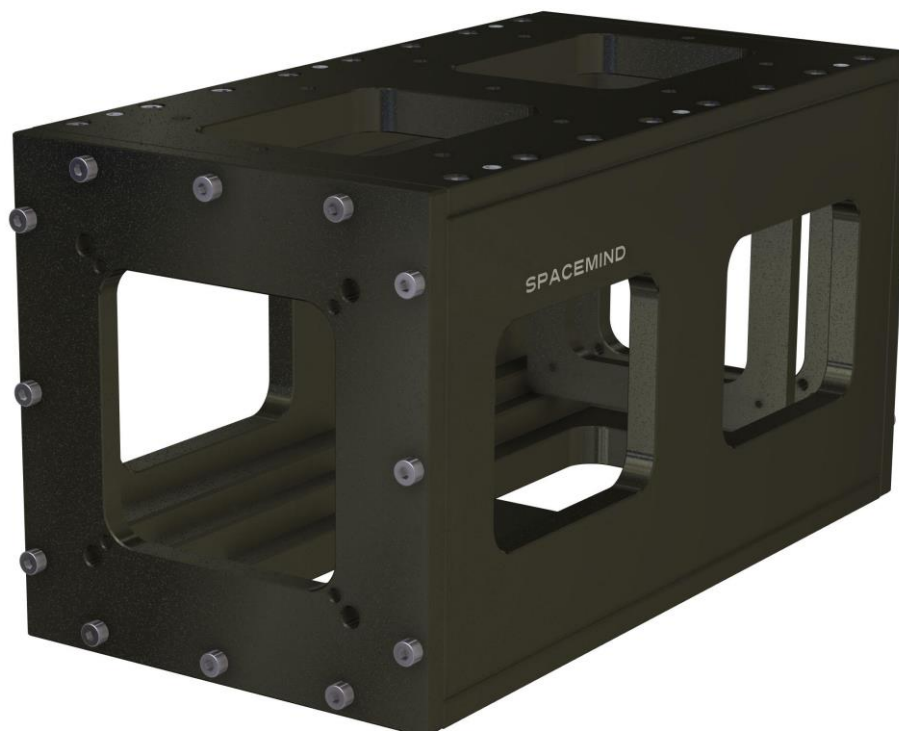


## PRODUCT FAMILY

TP01	
Form factor	IU
External Measures	143 x 141 x 136 mm
Mass	2,4 kg
Compatibility up to*	IU
Allowed Profiles	Random 14.1 g_rms sine 5-10 & 10-100 Hz - 3 g
Payload mass**	3 kg
Configuration option	
<b>Included item in stadard procurement</b>	<ul style="list-style-type: none"> <li>• TP01 testpod</li> <li>• 1x Regulation Plate</li> <li>• Assembly screws</li> </ul>
<b>Optional</b>	<ul style="list-style-type: none"> <li>• Form factor reducer</li> </ul>
<b>Shaker fixture interface</b>	<ul style="list-style-type: none"> <li>• Quoted and provided separately on customer requirements</li> </ul>
* minor form factor available with optional reducers	
** Maximum allowed mass in order to reach allowed profiles. Shaker performances shall be adequate.	



TP02	
Form factor	2U
External Measures	143 x 141 x 263 mm
Mass	4.2 kg
Compatibility up to*	2U/1.5U
Allowed Profiles	Random 14.1 g <sub>rms</sub> sine 5-10 & 10-100 Hz – 3 g
Payload mass**	5 kg
Configuration option	
<b>Included item in standard procurement</b>	<ul style="list-style-type: none"> <li>• TP01 testpod</li> <li>• 1x Regulation Plate</li> <li>• Assembly screws</li> </ul>
<b>Optional</b>	<ul style="list-style-type: none"> <li>• Form factor reducer</li> </ul>
<b>Shaker fixture interface</b>	<ul style="list-style-type: none"> <li>• Quoted and provided separately on customer requirements</li> </ul>
* minor form factor available with optional reducers	
** Maximum allowed mass in order to reach allowed profiles. Shaker performances shall be adequate.	



TP03	
Form factor	3U
External Measures	143 x 141 x 376,5 mm
Mass	5.8 kg
Compatibility up to*	3U
Allowed Profiles	Random 14.1 g_rms sine 5-10 & 10-100 Hz – 3 g
Payload mass**	6 kg
Configuration option	
<b>Included item in stadard procurement</b>	<ul style="list-style-type: none"> <li>• TP01 testpod</li> <li>• 1x Regulation Plate</li> <li>• Assembly screws</li> </ul>
<b>Optional</b>	<ul style="list-style-type: none"> <li>• Form factor reducer</li> </ul>
<b>Shaker fixture interface</b>	<ul style="list-style-type: none"> <li>• Quoted and provided separately on customer requirements</li> </ul>
* minor form factor available with optional reducers	
** Maximum allowed mass in order to reach allowed profiles. Shaker performances shall be adequate.	



TP06	
Form factor	6U
External Measures	267,3 x 148 x 382 mm
Mass	8.7 kg
Compatibility up to*	<ul style="list-style-type: none"> <li>• 6U 366,5mm /340,5mm</li> <li>• 2x 3U</li> </ul>
Allowed Profiles	Random 14.1 g_rms sine 5-10 & 10-100 Hz – 3 g
Payload mass**	13 kg
Configuration option	
<b>Included item in standard procurement</b>	<ul style="list-style-type: none"> <li>• TP01 testpod</li> <li>• 1x Regulation Plate</li> <li>• Assembly screws</li> </ul>
<b>Optional</b>	<ul style="list-style-type: none"> <li>• Form factor reducer</li> <li>• Form factor adapter for 2x 3U</li> </ul>
<b>Shaker fixture interface</b>	<ul style="list-style-type: none"> <li>• Quoted and provided separately on customer requirements</li> </ul>
* minor form factor available with optional reducers/adapter	
** Maximum allowed mass in order to reach allowed profiles. Shaker performances shall be adequate.	

